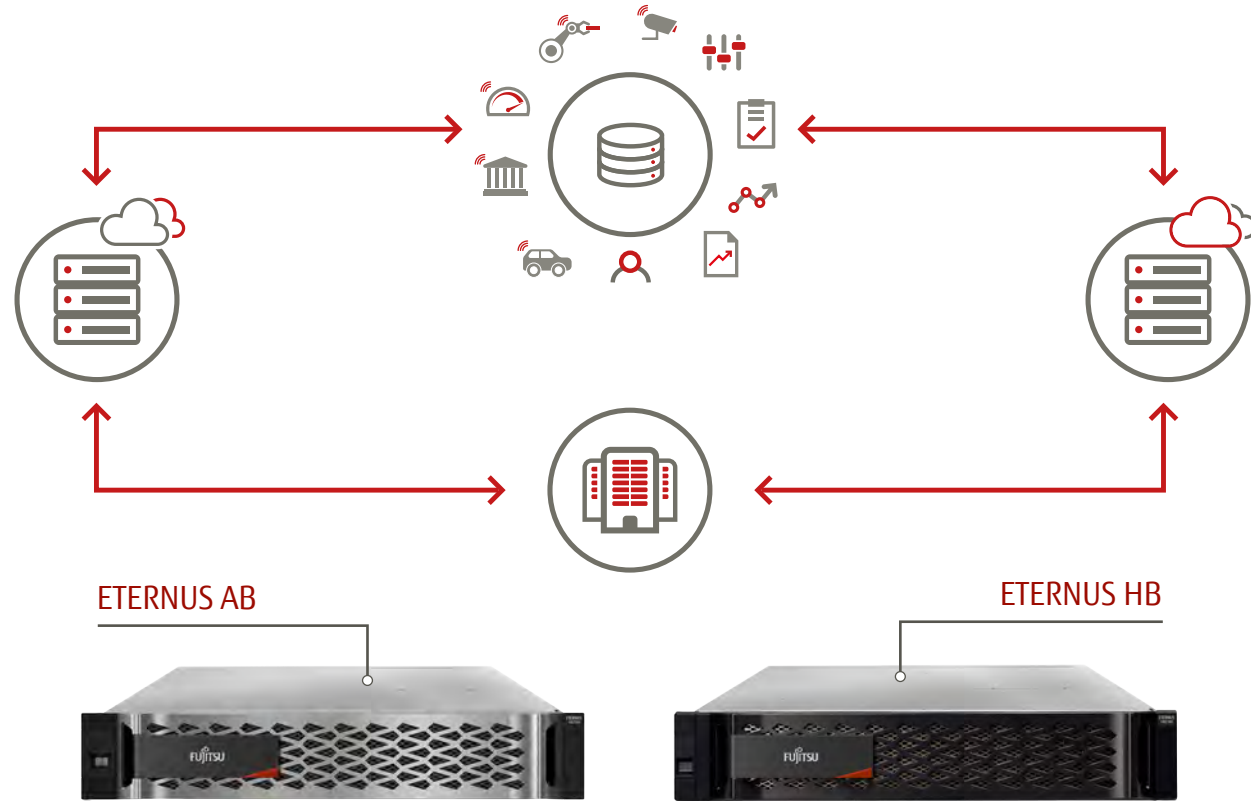


Traditional storage with a twist for the data-driven business

FUJITSU Storage ETERNUS AB All-Flash and ETERNUS HB Hybrid

Are you monetizing data to drive business decisions? Get the basics right: with data-centric storage



Traditional values

Performance



- Accelerate with secondary cache: efficient hard disk operation, reduced latency, fast reads

Reliability



- Protect data with encrypted drives
- Easily manage authentications via key in local controller
- Protect against data corruption through redundant transmission paths between shelves

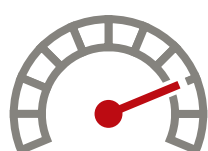
Flexibility



- Upgrade models on demand (just exchange controller)
- Use with multiple drive sizes & host interfaces
- Get support for variety of host interfaces

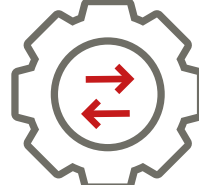
And here's the twist What makes ETERNUS AB and ETERNUS HB stand out:

Accelerate with end-to-end NVMe



- Support for NVMe connections from host to drive: powers ultra-fast response
- Enables smaller infrastructure footprint
- Built for demanding & compute intensive enterprise, cloud and edge data ecosystems

Easily automate and interact with RESTful API



- Powerful APIs for reporting performance at system/logical component level
- Seamless integration into existing ecosystems

Innovate with container microservices



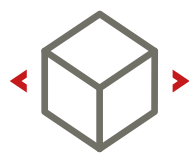
- "Lift and shift" existing applications into modern cloud architectures
- Develop new container-native applications
- Refactor existing applications for containers

Get cloud backup



- Cost effective basic backup & recovery to the cloud
- Full-block and file-based backups and restores, also using existing Amazon S3 account
- ETERNUS AB/HB support incremental backups to save bandwidth & opex

Where can ETERNUS AB/HB work its magic? For enterprises looking for:



Flexible SAN storage with performance and efficiency of block storage devices



Simple data management with variety of APIs (REST-based)



Orchestration of tools and plug-ins



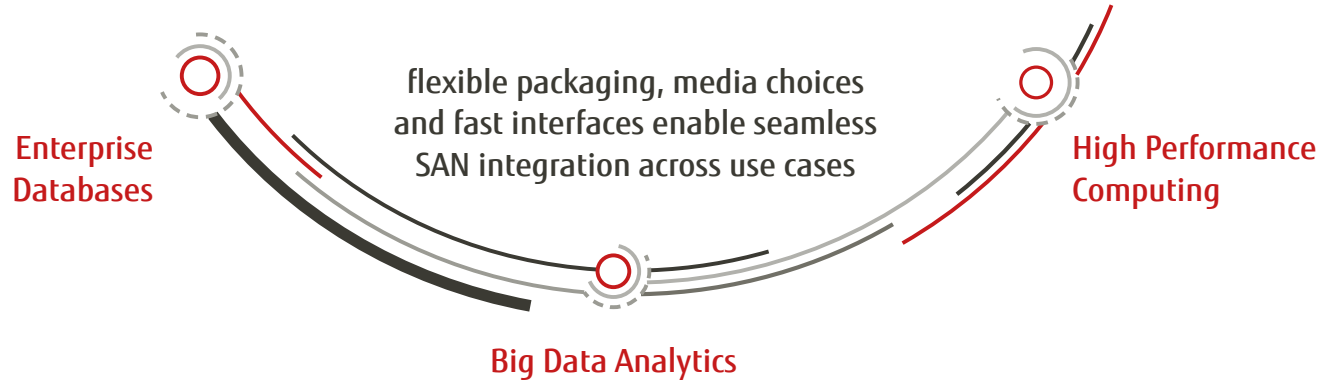
Performance driven



Reliable



Flexible



Built for integration into existing business critical workloads like Microsoft SQL server, Oracle, SAP

ORACLE

SAP

Microsoft SQL Server

Learn more about ETERNUS AB and HB:
**Traditional storage with a twist
for the data-driven business**